



Manual of 680-3A Self Propelled Floor Grinding Machine

Contents

1. Introduction

- 1.1 Summary
- 1.2 Responsibility
- 1.3 Accessories
- 1.4 Package acceptance
- 1.5 Machine name plate
- 1.6 Handling and storage
- 1.7 Warranty items

2. Safety guidance

- 2.1 Overview
- 2.2 Operation safety guidance
- 2.3 Electrical safety guidance

3. Machine

- 3.1 Overview
- 3.2 Machine parts
- 3.3 Swing lever accessories
 - 3.3.1 Overview
 - 3.3.2 LED light switch equipment
 - 3.3.3 Step Forward / back complication
 - 3.3.4 USB charge(clock)
 - 3.3.5 Handle
 - 3.3.6 The angle adjustment of swing lever.
- 3.4 Water tank
- 3.5 Quick connector
- 3.6 Front wheel
 - 3.6.1 The dismantle of front wheel
 - 3.6.2 The lifting and lowering of front wheel.
 - 3.6.3 Overturn of the front wheel
- 3.7 Additional weight
- 3.8 Clutch device
- 3.9 Inverter
- 3.10 Reserve battery charge

4. Machine operating

- 4.1 Overview
- 4.2 Machine position description.
 - 4.2.1 Machine working position
 - 4.2.2 Machine carriage position
 - 4.2.3 Machine package
 - 4.2.4 Machine upright position

4.2.5 Lift the machine

4.2.6 Precautions

4.3 Transportation

4.3.1 Manual

4.3.2 Automatic

4.3.3 Transportation and storage

4.4 Start and stop the grinder

4.5 Replace abrasives

4.6 Wind type of machine working wire

4.7 Grinding route(for reference)

5. Equipment maintenance

5.1 Overview

5.2 Daily check

5.2.1 Check the switches

5.2.2 Check the disc cover

5.2.3 Check the grinding plate

5.2.4 Long-term storage of batteries

5.3 Cleaning

5.3.1 Clean switch

5.3.2 Clean the grinding plate cover

5.3.3 Clean up the grinding plate and conversion block

5.3.4 Note

5.4 Overloading

5.5 Maintenance

6. Frequently Asked Questions and Solutions

7. Technical parameter

8. Warranty

1. Introduction

1.1 Summary

Xingyi machine are used to handle the floor surface. The scope of use of the machine depends on the choice of the tool. In addition to the use and general functions, this manual describes information on the use, repair and maintenance of the grinder. You can contact your local retailer for further information.

1.2 Responsibility

We make every effort to make this manual as complete and accurate as possible, and we are not responsible for any errors or loss of information. Xingyi reserves the right to change the instructions in this manual without prior notice.

This manual is protected by copyright law and cannot be reproduced or used in any part without the express written consent of Xingyi.

1.3 Accessories

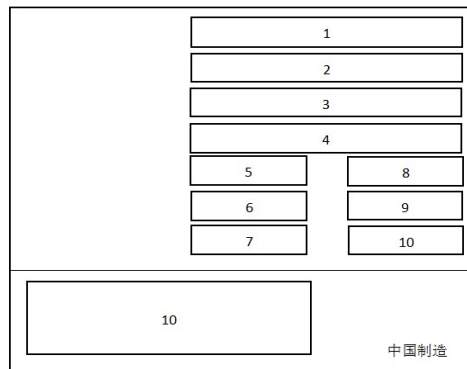
Below accessories are included with the grinder. Contact your supplier if anything is missing.

- (1) Grinding machine x 1set
- (2) User manual x 1
- (3) Velcro adapters x 12pcs
- (4) Power plug x 1pcs
- (5) Dust skirt x 1pcs
- (6) Key for inverter box x 2pcs
- (7) Quick Connector

1.4 Package Acceptance

Check carefully to see if the package or the grinder has been damaged during delivery. If there is any sign of damage, contact your supplier and report it. Check that the delivery matches the order. If there are any discrepancies, contact your supplier.

1.5 Machine name plate



- | | |
|-----------------------|---------------------|
| 1. Model | 6. Voltage |
| 2. Model number | 7. Electric current |
| 3. Manufacturer | 8. Frequency |
| 4. Manufacturing date | 9. Weight |
| 5. Power | 10. Address |

1.6 Handling and storage

The grinding machine should be stored in a dry place at room temperature when not in use. Otherwise, it may be damaged by condensation and moisture. The size and weight of the grinder are given in the technical data of the Manual.

Note! Improper operation may lead to the grinding machine being overturned and damaged, even endangering personal safety.

1.7 Warranty items

This warranty covers only manufacturing defects. Xingyi does not assume damage in the transport, unpacking or operation. The manufacturer is not responsible for any damage or defects caused by improper use, corrosion or use of specifications beyond the noted specifications. The manufacturer shall not be responsible for any indirect damage or expense under any circumstances. For complete information on the manufacturer's warranty period, please refer to the current warranty terms of Xingyi. Local retailer may have special warranty terms. If you have any uncertainty about the warranty terms, please contact your retailer.

2. Safety guidelines

2.1 Overview

This manual records the key information for machine safety operation. Read the manual carefully before your first operation.

Non-standard operation, modification or maintenance without training may cause losses, machine problems or injury. You are allowed to operate the machine after training. All maintenance must be done by qualified professional technician. Any machine parts that need to be changed must be provided by XINGYI.

Xingyi machines only can be used in the way of Xingyi recommended. And they can only be used for commercial purposes. Anyone who uses a machine should know its function, the location of the emergency stop. The operator should have to ensure the safety rules that the unauthorized person cannot be stationed at work area when the machine starts.

The operator should be equipped with professional personal protective equipment when you are at work: safety goggles, protective gloves, safety shoes, breathing masks, hearing protection, etc. Do not wear loose clothes or anything that can get caught in the machine such as scarves, bracelets, rings and so on.

Note:

1. It is strictly prohibited to operate under the condition that the electricity is less than 20%, especially on slopes, to avoid personal injury.

2. When working on the slopes, please check the battery's electricity should be more than 40%, and the clutch is locked.

3. When this machine needs to operate in a place with slopes, it should be less than 25 degrees. The company is not responsible for any accident caused by the operation when the slope is greater than 25 degrees.

4. This machine is only used for floor grinding, polishing;

5. Read and understand the safety guidelines. Different models have different accessories and operation instructions.

6. Operation of this machine only needs one person. Keep children and irrelevant person away.

7. Operator who is in poor physical state or without training is not allowed to operate the machine.

The operator and the repairman must be physically strong and able to withstand the weight of the whole machine and the working intensity of the motor.

8. Do not lend or rent the machine without an instruction manual.

9. Wear personal protective safety equipment.

10. Random modification of the machine is not allowed. Only XINGYI accessories can be used for maintenance and adjustment.

11. Do not operate the machine outside on rainy or foggy days.

12. Ensure no explosive flammable materials and steam nearby when operating the machine. Do not operate machine near a place with fuel, grain dust, solvents, dilution agent or other flammable items.

2.2 Operation safety guidance

1. Operators should wear protective equipment when using the machine, such as dust masks, protective gloves, overalls, helmets, insulated shoes.

2. Make sure there is no oil leakage, electric leakage, water leakage on the machine before use.

3. Check the machine control switches and electric parts are in good conditions without moisture.

4. Make sure there are no obstacles or human being at working area. and make sure there is enough lighting device.

5. The dust cover should be installed on the machine for safety. It is necessary to connect to industrial vacuum cleaner when dry grinding.

6. The machine should be connected to an appropriate electrical outlet. Only use the power cables that can withstand high current.

7. Do not adjust the handle during machine operation. Only when the machine is stopped and the emergency stop switch has been pressed, the worker can adjust the machine.

8. The handle has different functions when it is in different positions. Please read the manual for more information.

9. Ensure the machine has stopped operating and the emergency stop button is pressed when changing abrasives or accessories. If necessary, disconnect the power and the plug.

10. Keep the machine away from drains and furnace mouths or other dangerous goods, otherwise it may cause personal injury or loss of machinery and property.

11. Tight-hold hand grip, clockwise rotate the emergency switch, then turn on the power button and start the machine.

12. Please note that the emergency stop switch can only be pressed or rotated. Prohibit upward pull.

13. Before operation, check the working surface and remove any protrusion to prevent machine plates and pads from damage.

14. Double check before connecting to power, make sure the working Voltage, HZ is same with input Voltage and HZ, no lack of phase of input power. (If the machine do not work normally, and it results in the input power and working power is not the same, then manufacturer's warranty is unavailable.)

15. Connecting with vacuum to achieve dust free working condition.

16. Install appropriate abrasive. Improper abrasive may cause personal injury and floor damage.

17. After installing the abrasive, keep the grinding plate touch with ground directly, adjust handlebar to the "lifting position", so that the operator could operate the machine easily.

18. When machine inverter turns to overload protection, it means there is something wrong with the machine (cable is too small or voltage is unstable), if so please reference the following cable sizes which are recommend. Or reduce the abrasive pressure (adjust the additional to suitable position) if users keep using the machine when overload leads to damage, it would be not allowed to guarantee.

19. After few minutes of grinding, stop to check how much the abrasive uses. This behavior could reduce economic loss when using wrong polishing pads.

20. Please do not upward the machine when machine is still running, otherwise the polishing pads may fly out to threaten human safety.

2.3 Electrical safety guidance

1. All circuit repairs can only be carried out by qualified personnel.
2. Note: After the machine is stopped, the line is still energized. Disconnect all power before servicing the machine.
3. The machine is equipped with an overload protection device, and it will automatically jump off when the machine is overloaded, to prohibit the machine from running; (re-adjust this overload in case of safety).
4. Continue to use the machine in the overloaded situation may cause some other losses even machine can't work normally, then manufacturer's warranty is unavailable.
5. The purpose of installing an inverter in the machine is to speed and protect the user and the machine. It is forbidden to modify or adjust the inverter and modify the inverter parameters without the manufacturer's consent. If the unit fails, it is only allowed to replace the defective parts with the accessories provided by the manufacturer; (Other loss caused by changing, adjusting or modifying the inverter parameters without the manufacturer's consent, and the machine is not working properly, the manufacturer does not afford warranty)
6. Never modify the parts or lines inside the inverter by yourself.
7. Do not operate the machine when the distribution box is turned on.
8. If the machine current is overloaded, please pay special attention.
9. When the cables is energized or loaded, do not connect or disconnect the wires.
10. Using a damaged power cord may result in electric shock. Do not use a damaged power cord.
11. Cables should be kept away from hot surfaces.
12. The dryness of all electrical equipment should be maintained, and the machine should be kept in a dry place;
13. After the power is turned off, before the panel indicator is off, it indicates that there is still high voltage inside the inverter, which is very dangerous. Do not touch the uninsulated electrical equipment.
14. The machine motor and the frequency conversion box are prohibited from moisture intrusion, (the other damage caused by the water inflow then the machine is not working properly, the manufacturer does not cover the warranty);

3. Machine

3.1 Overview

680-3A is used to grind rough grind, fine grind and polish concrete, natural stone and terrazzo floors or other materials specified in this manual or recommend by XINGYI.

The 680-3A is a self-propelled grinder. The forward/reverse switch can be used to control the forward and backward movement of the driven wheel, so that the user does not need to manually push or pull the machine to forward/reverse, which greatly saves manpower and lowers operator fatigue.

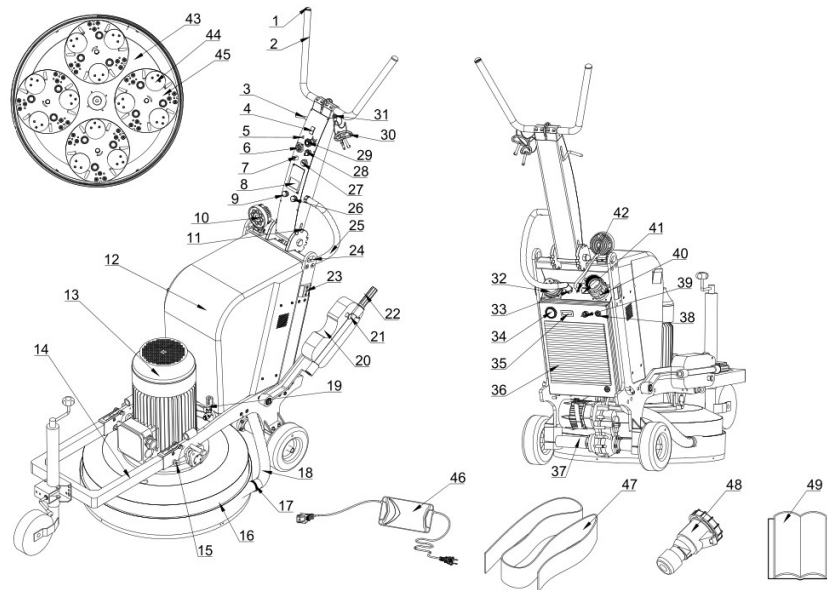
The innovation of this equipment is that it is equipped with a water tank and add additional weight. The heat dissipation openings on both sides of the water tank make the heat dissipation of the frequency conversion box faster and extend the service life of the internal electrical appliances. The design of the water tank allows the equipment to be applied not only in dry grinding but also water grinding. The benefits of water grinding are as follows: good flatness, small cutting amount, easy polishing, suitable for later stone polishing. Increasing additional weight makes lifting easier, and the grinding pressure can be increased for more efficiently.

The swing lever and handle can be set in many different tilted positions. When the machine is manually operated, you can choose the most suitable position. The grinding head of the machine can be used with different grinding plates for operation. The dust belt covers the working area of grinding head. Because of floating design, it always contacts the floor, which not only ensures that the operator does not touch the rotating mechanical parts, but also reduces the exposure of dust and improves the dust absorption efficiency of the vacuum cleaner.

When dry grinding, to prevent dust from being exposed to air, posing a threat to the health of the operator and nearby people, make sure that the vacuum cleaner is connected to grinder (to a dust collector recommended by Xingyi). Due to inhalation of dust is harmful during operation, even if there is a vacuum cleaner connected a protective mask may also be necessary to protect health.

The machine can use different Xingyi abrasive. Due to the different ground materials, the abrasive discs used in grinding are also different.

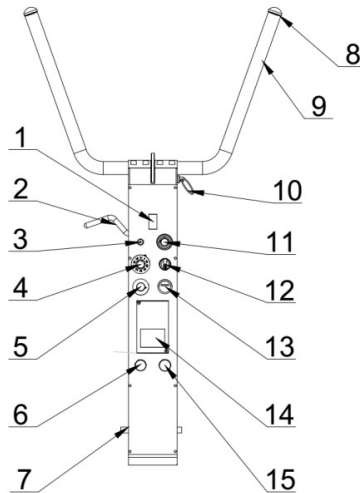
3.2 Machine Parts



- | | |
|--|---------------------------------|
| 1. Handle rubber sleeve | 27. USB interface |
| 2. Elbow handle | 28. Forward and reverse switch |
| 3. Swing lever angle adjustment handle | 29. Emergency stop switch |
| 4. Forward and backward switch | 30. Inverter box key |
| 5. LED light switch | 31. Handle adjustment latch |
| 6. Motor speeder (disc) | 32. Power outlet |
| 7. Driving wheel speeder | 33. Wire connector |
| 8. Display | 34. Timer |
| 9. Power indicator | 35. Battery power indicator |
| 10. LED lights | 36. Heat sink |
| 11. Swing lever locking rod | 37. Driving wheel motor |
| 12. Water tank | 38. Electronic control box lock |
| 13. Motor | 39. Drive wheel start switch |
| 14. Front wheel supporting device | 40. 50mm Suction inlet |
| 15. Supporting wheel bolt | 41. Battery charging port |
| 16. Floating dust cover | 42. LED light interface |
| 17. Hose clamp | 43. Gear box |
| 18. Suction pipe | 44. Conversion block |
| 19. Water switch | 45. Grinding plate |
| 20. Additional weight | 46. Charger |
| 21. Additional weight bolt | 47. Dust cover |
| 22. Additional weight bolt pole | 48. Power plug |
| 23. Additional weight limiting device | 49. Manual |
| 24. Lifting hole | |
| 25. Corrugated pipe | |
| 26. Operation indicator | |

3.3 Swing lever accessories

3.3.1 Overview



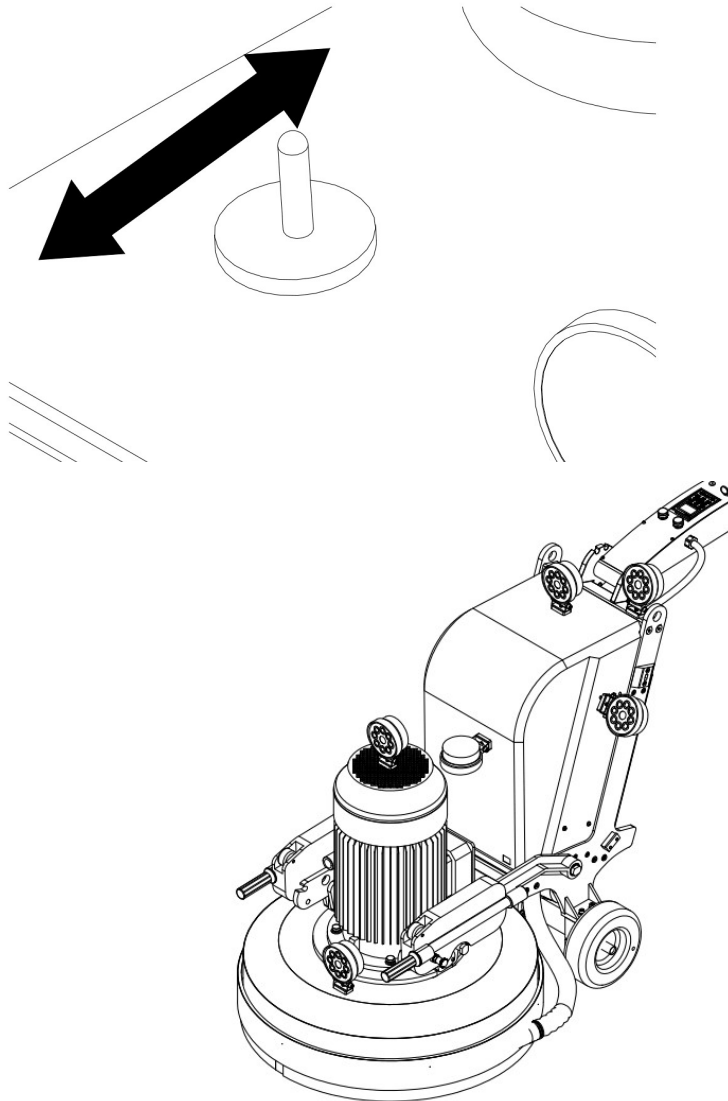
1. Forward/reverse switch: Controls the forward and backward movement of the machine.
2. Swing lever angle adjustment handle: the handle can adjust the angle of Swing lever to corresponding location.
3. Driving wheel speeder: adjust the walking speed of driving wheel.
4. Speeder: adjust the rotation speed of the motor.
5. LED light switch: control the LED light.
6. Power indicator: When the device is plugged in, the power indicator will light up.
7. Swing lever locking rod: lock the rotation of swing lever.
8. Operation handle: Where people put their hands when operating the machine.
9. Sponge cover (handle): make the operation more comfortable.
10. Operation handle angle adjustment bolt: pull out the bolt and the handle can be rotated freely to the proper position to operate the device.
11. Emergency stop switch: When the device is in a dangerous state or needs to stop working, press the emergency stop switch to cut off the power and stop the operation of the device to achieve the protection of personnel and equipment safety.
12. Forward/reverse switch: The switch has three gears. Turn on the emergency stop switch. Turn it to the left to rotate the motor forward, turn to the middle gear to prevent the motor from rotating, and turn to the right to reverse the motor.
13. USB interface (clock): used to charge.
14. Display: display some parameters, such as voltage, current, motor speed and fault code.

15. Running indicator: When the device is working normally, the running indicator lights up.

3.3.2 LED light switch equipment

Toggle the LED light switch to ON, LED light will be turned on, otherwise turned off.

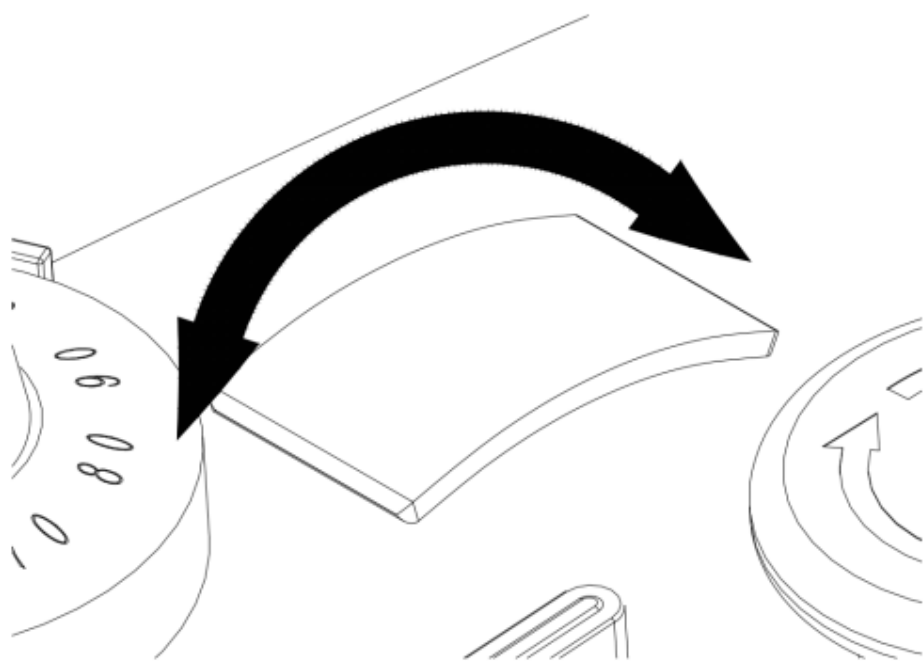
The base of LED light is magnetic to placed freely. During operating, the different positions need different lighting direction. Under the circumstances, user can put the LED lights on the desired location to illuminate.



3.3.3 Step forward / reverse switch.

The forward / reverse switch is mainly used to control the forward or backward movement of the machine. Users can make the machine move forward/backward without pulling or pushing. Such this device greatly reduce the manpower, making the more convenient operation.

The forward / backward switch has three main gears, one is forward: press forward, then the machine forward move; the second is the middle gear, press to the middle gear, the machine remains stationary (if the machine is currently forward, you should press back it to the middle gear; The third one is the reverse gear, press it back, then the machine to recede accordingly.



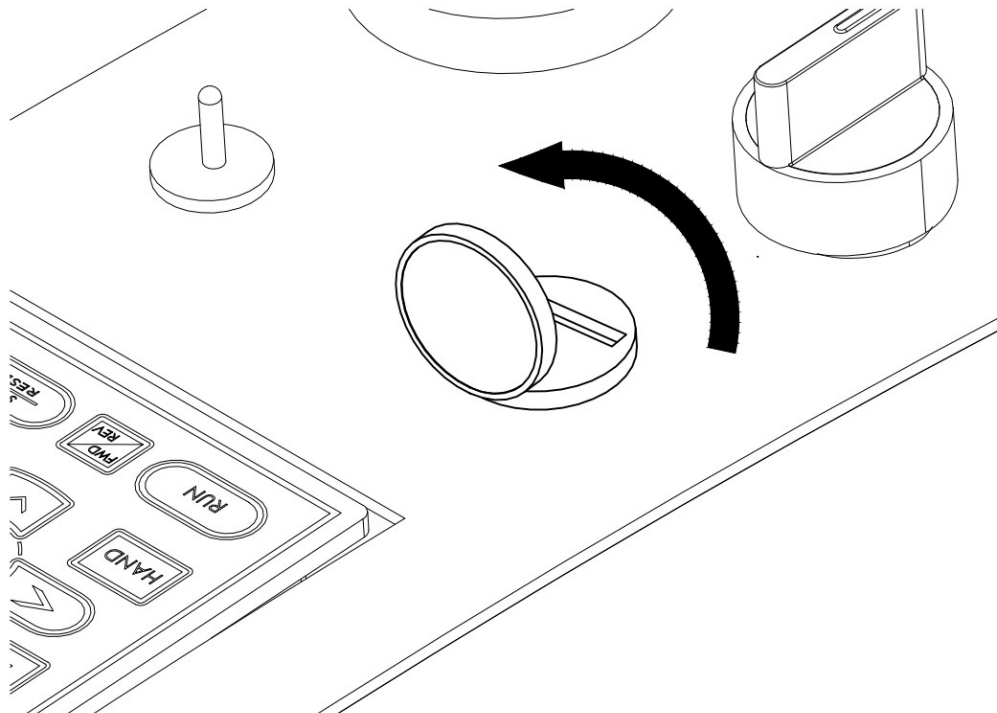
Note:

In the exchange of different gear, it should be noted that overexertion will lead to trip over stop.

During grinding, do be sure to connect a vacuum cleaner. It is suggested to use the vacuum cleaner produced by XINGYI to ensure vacuuming efficiency. Bad vacuum cleaner is likely to clog the dust in the forward / reverse switch, resulting in a switch failure.

3.3.4 USB charge (clock)

There is a watch shape of the device on the control panel. The clock is convenient for users to see the current time. Turning up the clock, we can see a USB interface, which can be used to charge mobile phone or other device.

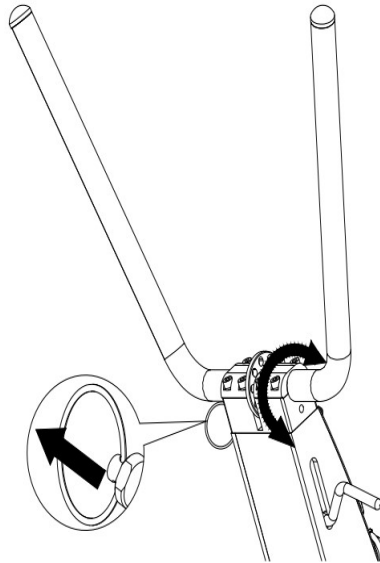


Note:

Be sure to cover the lid when it is not charging. To prevent dust from entering, plugging or damaging the USB interface, do not expose the USB outside.

3.3.5 Handle

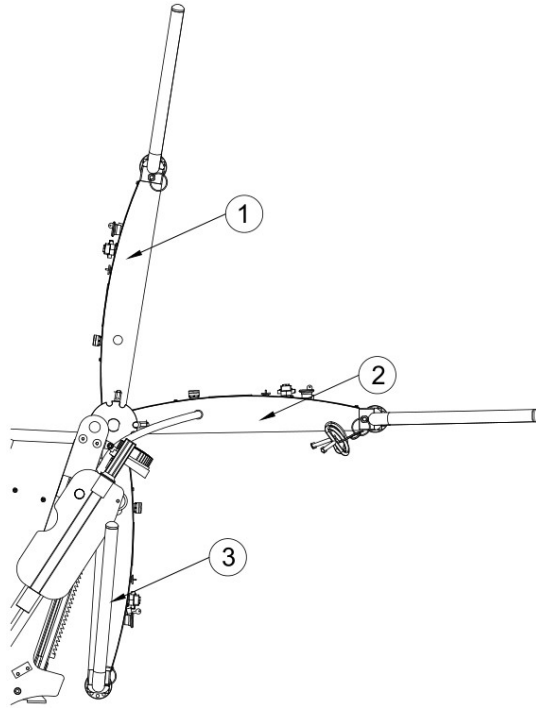
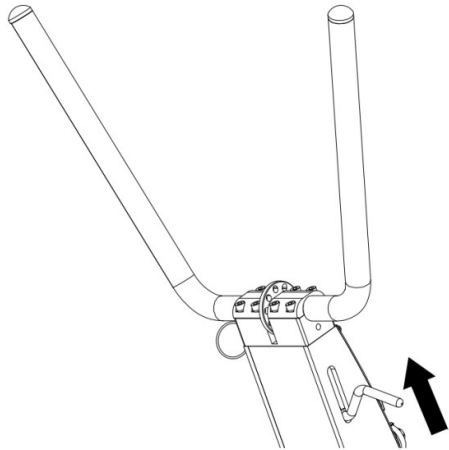
The swinging lever adjustable device adjusts the different positions of the swinging lever by adjusting the handle to adapt to the conversion of the machine placement mode in different states. Hold the handle in one hand to support the swing lever, press the adjustment handle with the other hand down, and rotate the swing lever to the desired position according to the hole position on the sector plate, then release the adjustment handle.



Note:

1. When plugging out the pin, sometimes it will be caught, and the pin can be pulled out by shaking the support wheel.
2. When the handle adjustment bolt is automatically reset, the hole may not be aligned, just rotate up and down
3. When adjusting the position of the handle, please check whether the handle adjustment pin has been automatically reset before operating the machine.

3.3.6 The angle adjustment of swing lever



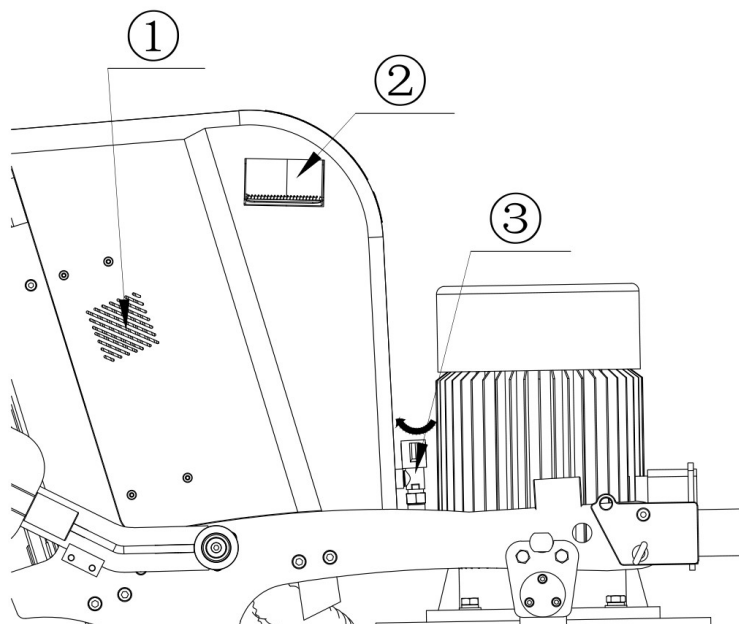
① Lifting position ② Working position ③ Packaging position

Note:

After adjusting the position of the swing rod, it is necessary to check whether the swing rod has been limited before operating the machine.

3.4 Water tank

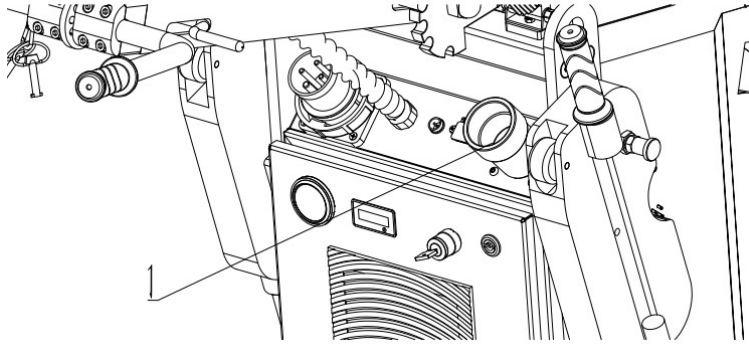
There is a water inlet on the side of the water tank (open the water injection port as shown below). The heat dissipation openings on both sides of the water tank make the heat dissipation of the inverter box of the equipment faster and can extend the service life of the electrical appliances inside the inverter box. Turn the water switch clockwise to start water grinding.



① Vent ② Water inlet ③ Water switch

3.5 Vacuum pipe connector

Insert the vacuum pipe into the vacuum pipe connector (1) and screw it in through the internal thread of the vacuum pipe connector until it is tightened.



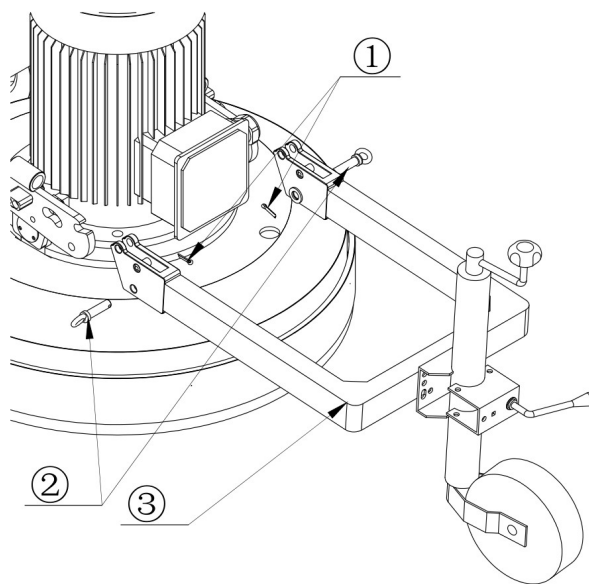
3.6 Front wheel

3.6.1 Disconnecting the front wheel.

The supporting wheel is assembled before transporting, which can make the steering smoother. When transporting the machine, sometimes it is necessary to move the machine forward and backward, so it is more convenient and labor-saving to install the supporting wheel to carry out the movement of the grinding machine. Remove or invert it when grinding.

Remove the support wheel: press the emergency stop switch, unplug the power plug, unravel the R-shaped split pin, remove the locating pin outward, and translate the support wheel downwards.

Install the support wheel: press the emergency stop switch, unplug the power plug, align the support wheel with the pin hole of the front wheel support frame, then insert the positioning into the positioning, insert the R-type cotter pin, and fix the locating pin.



①R-shaped bolt ②Supporting wheel bolt ③Supporting wheel

Note:

When plugging out the pin, sometimes it will be caught, and the pin can be pulled out by shaking the support wheel.

When pulling out the latch, hold the support wheel with one hand to prevent the support wheel from suddenly turning down.

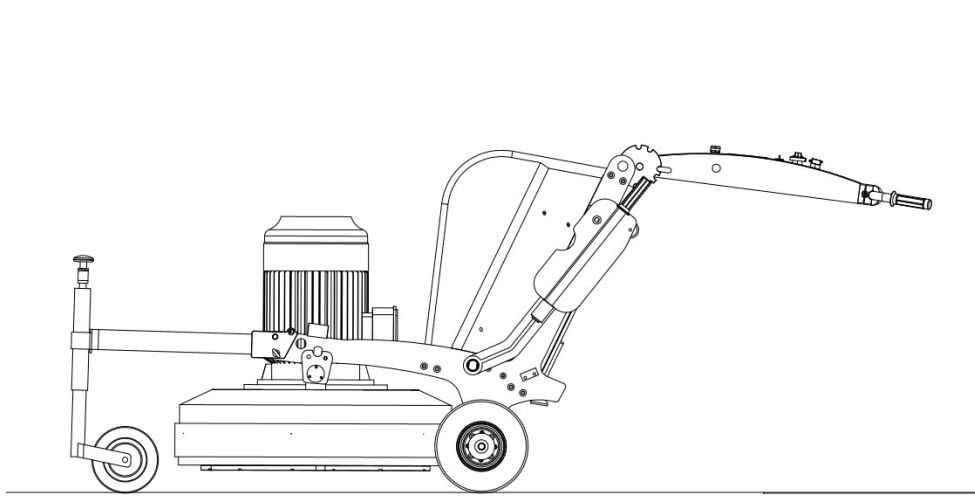
3.6.2 The lifting and lowering of front wheel.

The support wheel can be lowered by rotating the handle of the support wheel and raise the grinding device from the working area. (Clockwise rotate the support wheel handle to rise the grinding equipment from working area, anticlockwise to lower it)

Note:

In the process of transportation, it would be better to remove abrasive in advance to prevent from falling and loss. If lost, the manufacturer will not provide compensation.

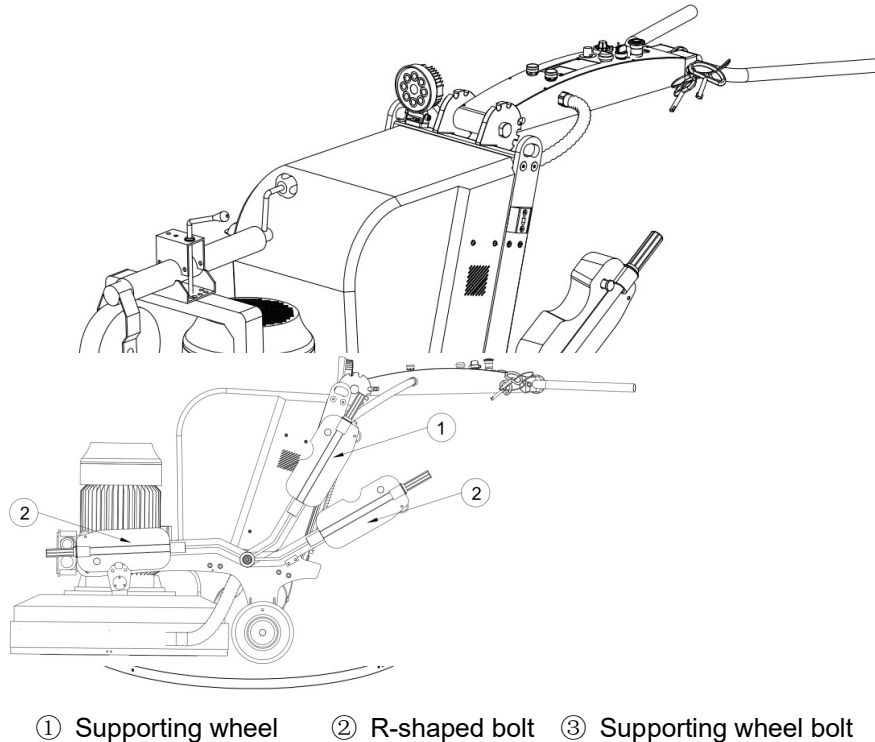
During rotating and rising, please tighten the lock handle to supporting axle, and then adjust lifting of the support wheel. The handle rotation direction left to loose, right to tight.



3.6.3 Overturn of the front wheel

1. Unlock the R-type cotter pin, remove the positioning pin in both sides (No. 1 parts)
2. Then attach the support wheel (Part No. 1) to the front wheel support frame (Part No. 3) in the direction of rotation.

3. Insert the locating pin into the r-type cotter pin and fix the locating pin.



Note:

The support wheel must be lowered to the lowest position before it can be turned over.

When the plug is pulled out, it may get stuck. Just shake the support wheel and pull out the bolt.

3.7 Additional weight

There are three positions for the additional weight iron: transporting, tilting, and working position. The adjustment and limit of the extra weight is mainly achieved by spring pin and limiting device on the frame.

- ① Transporting position ② Tilting position ③ Working position

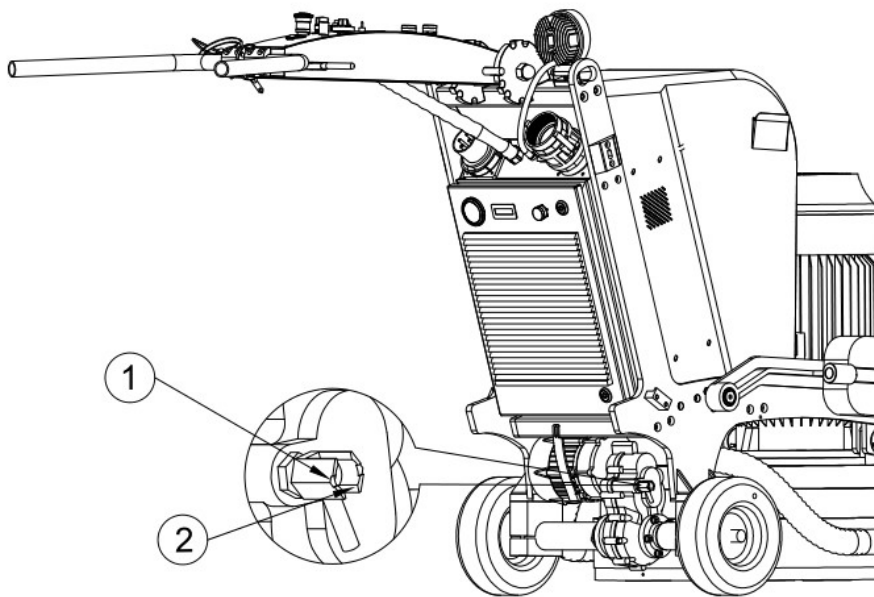
Note:

Please hold the additional weight iron when you switch it. When the additional weight iron is switched from the transporting position to the other position, pull out the handle on the additional weight iron positioning pin. Then the position can be switched.

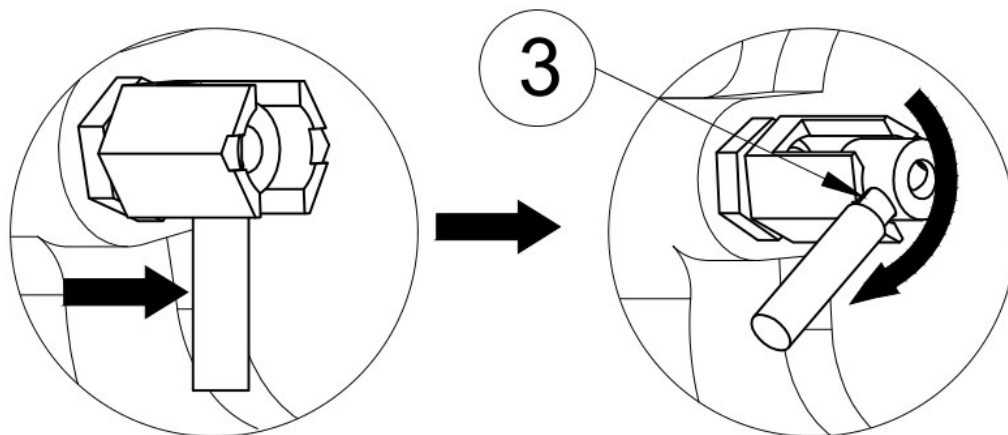
3.8 Clutch device

The clutch device (the device composed of the clutch rubber sleeve and clutch pin is collectively referred to as clutch device) has two main states:

Unlocking state: When the machine is not working, loosen the clutch device, then pull out the clutch pin, rotate the clutch pin sleeve, and stuck the clutch pin in the limit device of the clutch pin sleeve to tighten the clutch device.

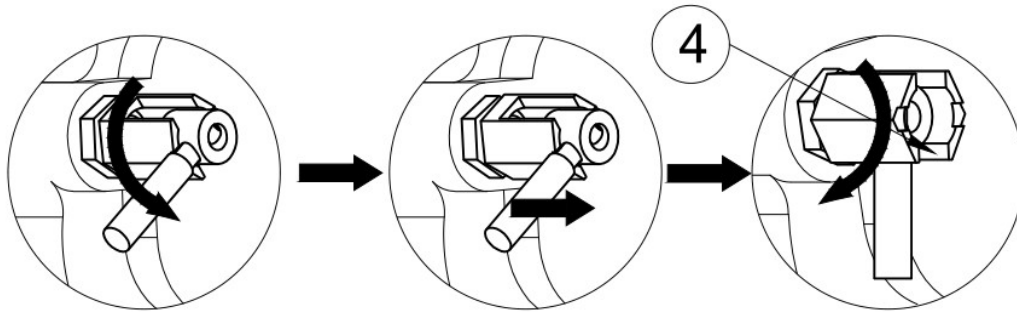


③ Clutch rubber sleeve ② Clutch pin



③ Limiting position1

Locking state: When the machine starts working, loosen the clutch device, then pull out the clutch pin, rotate the clutch pin sleeve, and clamp the clutch pin on the limiting device 2 to tighten the clutch device.

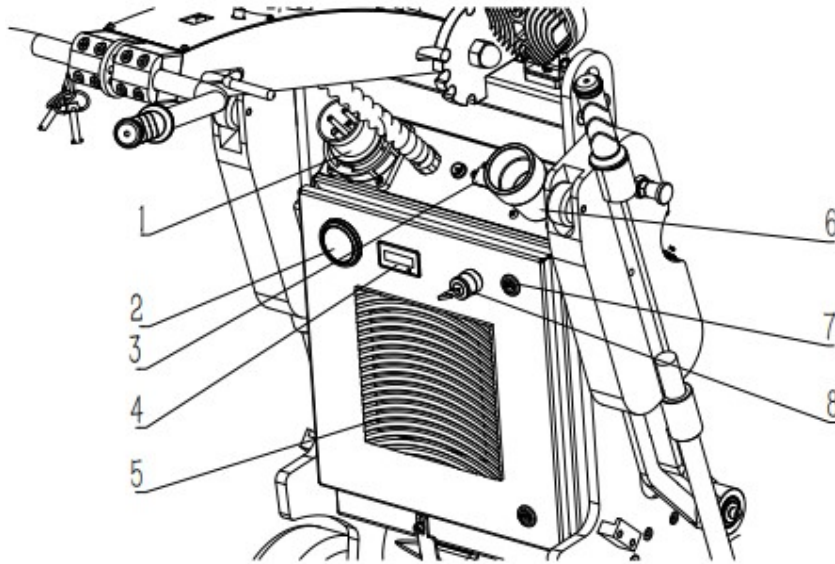


④ Limiting position 2

Note:

1. The clutch may be stuck sometimes when you try to pull it out, shake the machine in this case.
2. Rotate the clutch to the proper position when grinding. Be sure to limit the clutch pin before working.
3. When pulling or rotating the clutch device, be sure to put the additional weight in working position first to prevent the iron from injuring or hitting people, causing unnecessary injuries.
4. When unplugging or screwing the clutch pin, do not screw the clutch device too loose or too tight, or the clutch pin cannot be pulled out and stuck in the limit device smoothly.

3.9 Inverter box

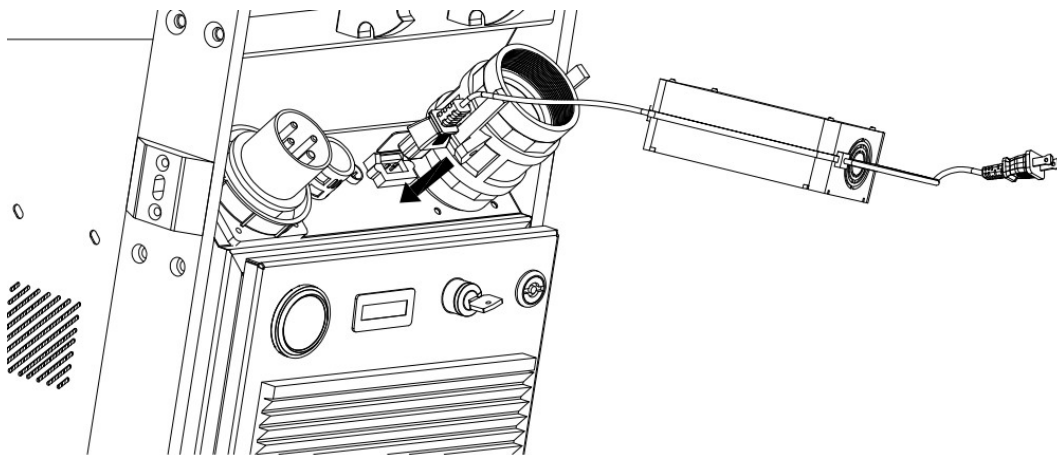
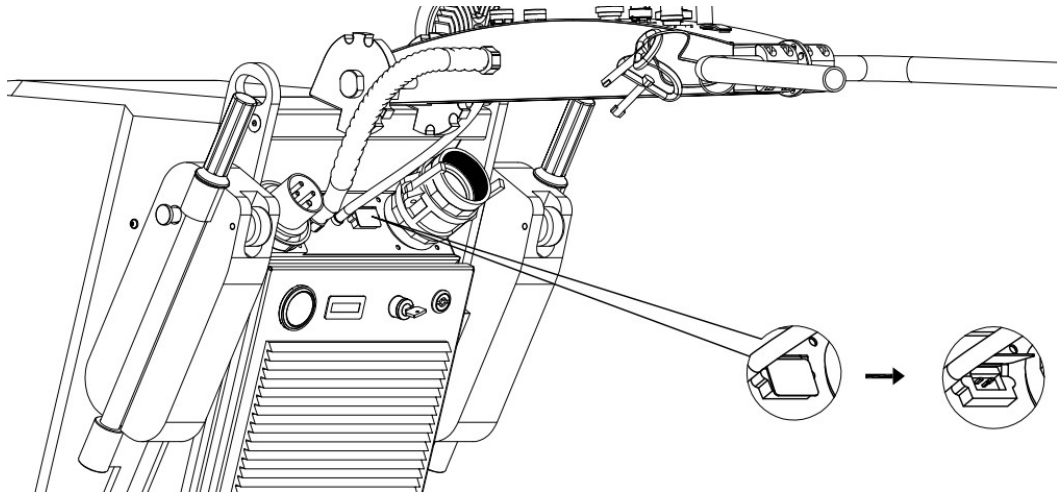


1. Power socket: connected to an external power, supply power to the machine
2. Timer: shows the total running time of the device.
3. Charging hole: for the device's own internal battery to charge. Charge the internal battery of the machine
4. Battery indicator: mainly shows how much reserve power for the battery.
5. Heating sink: play a role in heat dissipation, to avoid excessive temperature inside the inverter box burning out electrical components.
6. 50mm Vacuum tube connector: connection to the vacuum cleaner.
7. Inverter box key lock: used to lock the inverter box.
8. Driving wheel start switch: Turn the key switch clockwise to start the drive wheel motor, conversely, to turn it off.

3.10 Reserve battery charge

When the machine's reserve battery has run down, the power indicator on the inverter box shows less than 20%, then it need to be charged. The charging port is next to the suction tube connector on the

inverter box. Open the cover of the charging port and use the charger provided by the manufacturer to charge.



4. Machine operating

4.1 Overview

The following part mainly describes the grinder in different positions when the mode is switched to manual operation, the main operation of the grinder and how to install the grinding abrasive.

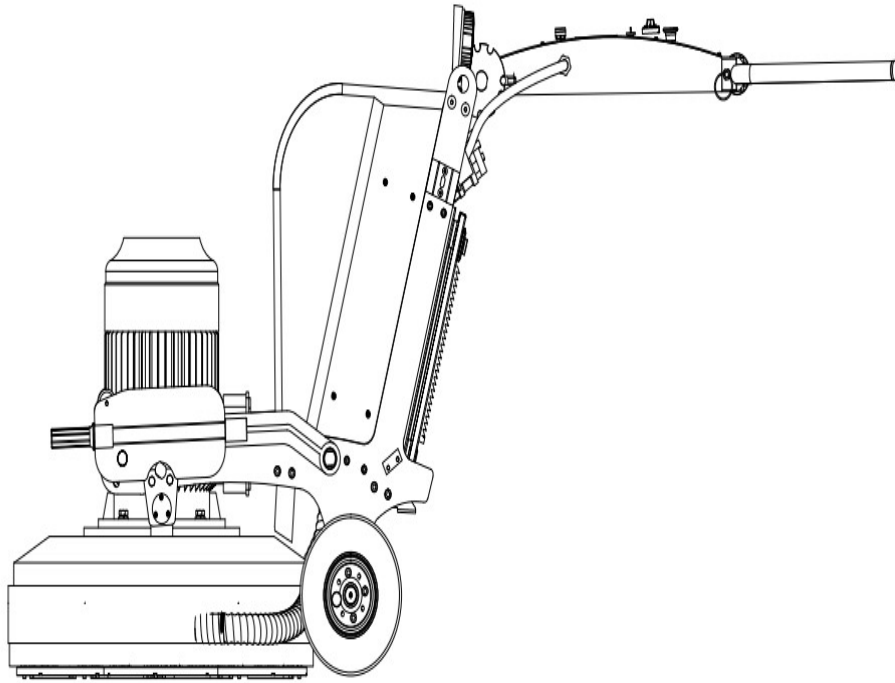
Note:

1. Grinders can only be used or repaired by personnel who have received the necessary theoretical and practical training and have carefully read the user manual.
2. Wear protective equipment such as protective gloves, protective masks, overalls, helmets, insulated shoes, etc. when operating the grinder.

4.2 Machine position description.

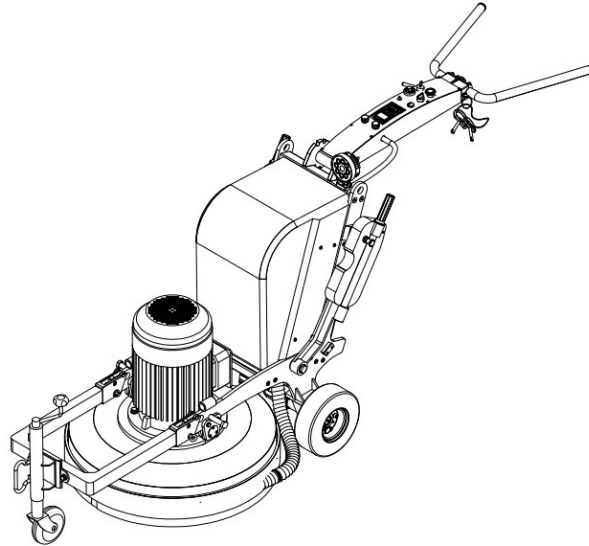
4.2.1 Machine working position.

During grinding, pull out the spring pin on the additional weight, reach the gasoline motor, gently lower the additional weight to the proper position, adjust the handle and swing lever position to achieve the most proper working position. Flip up or remove the support wheel.



4.2.2 Machine carriage position

During transportation, adjust the additional weight, swing lever and handle to the transport position. Then, pull the clutch pin out. Lower and rotate the support wheels to lock, adjust the height of the support wheel so that the disc is off the ground for easy transportation.



Note

Do not rotate the support wheel to an excessive position to prevent it from falling off, which may cause dangerous accidents.

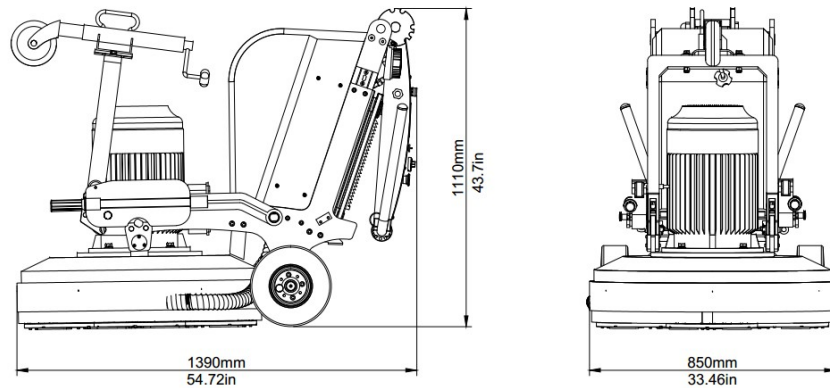
When rotating the support wheel, always pay attention to the height of the grinding disc from the ground. Be careful not to make the grinding disc too low. When it is too low, the grinding disc will cause a collision with the ground and damage the grinding disc.

Rotate and lower the support wheel to raise the grinding machine from the working area. It is recommended that the lowest position of the grinding disc is 1" (25mm) from the ground.

4.2.3 Machine package

Adjust the position of the swing lever, foot pedal and handle to the packaging position.

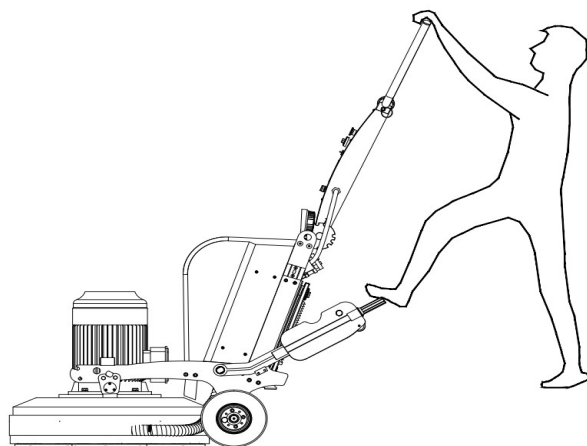
The minimum package size is as follows and the machine can be packaged according to the specific size.



4.2.4 Machine upright position

Adjust the bolt of the extra weight so that the extra weight is in tilted position, and adjust the handle, pedal and swing lever position to the lifting position. (Recommended best tilting position)

Hold the handle with both hands and place one foot on the additional weight to force the machine down.



To put the machine down, you need to hold the handles tightly with both hands. Place feet on the handle of the extra weightlifter, balance the machine with your own gravity, and slowly lower it to protect the grinding head. When you put down the machine, pay attention to your own strength, and do your best

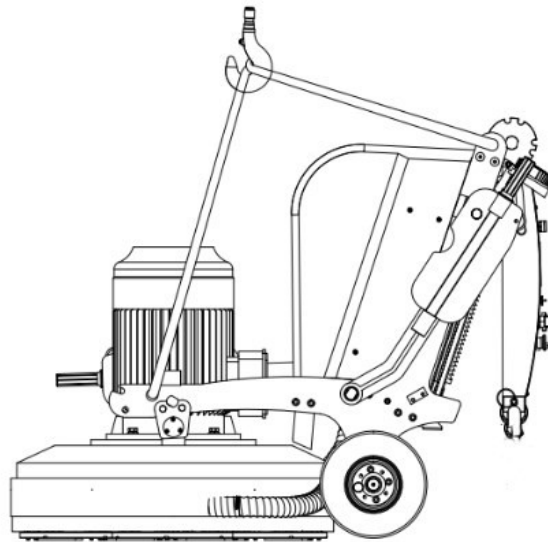
to ensure the safety of the machine and the person. XINGYI company does not assume any responsibility for machine damage and personal injury caused by improper operation.

Note:

After lifting up the machine, remember to stand next to the grinding head, slightly press the grinding head to see if the machine is stable for personal safety.

4.2.5 Lift the machine

Tie the lifting strap tightly to both the two lugs, one is next to the motor and the other one next to the dust cover.(Note: you need to use two ropes that can withstand 500 kg to bind the machine.



Note:

1. When lifting the machine, it may cause personal injury or damage to the machine and surrounding objects. Make sure that no one is present in the danger zone during the lift.
2. After the strap is fixed to the lifting hole, you should also check whether it is firmly fixed.
3. The two straps need to be diagonally connected to the lifting hook.

4.2.6 Precautions

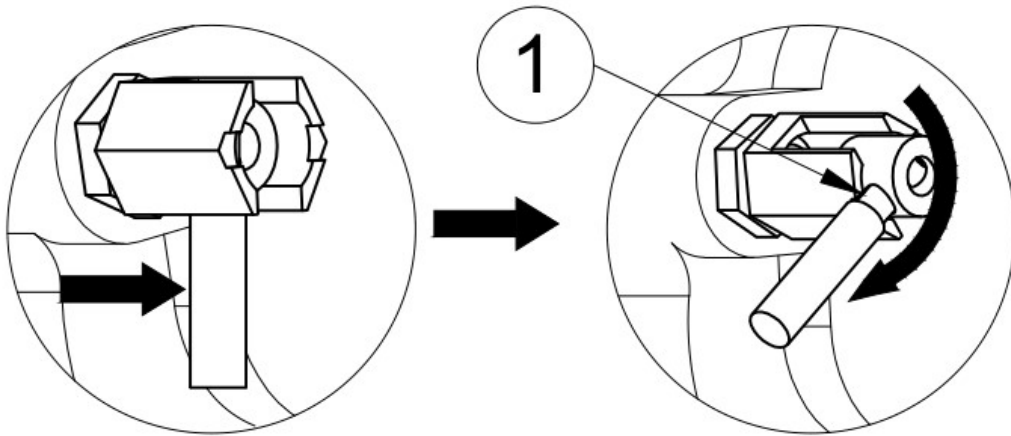
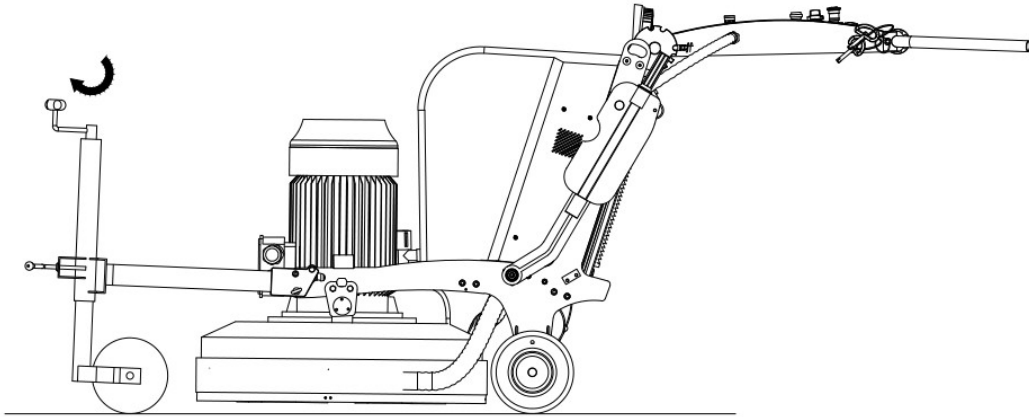
1. Improper operation may lead to the grinding machine being overturned and damaged, even endanger personal safety.
2. When the handle adjustment pin is pulled out, it may get stuck. Just shake the handle and pull out the pin.
3. During adjustment, it is necessary to confirm the reset of the locking device before operating the machine.
4. Be careful when the grinder is adjusted to the position of transportation or packaging and there is a risk of crushing injury.
5. Dust inhalation is harmful. Make sure the machine is connected to the recommended dust collector.
6. In the process of lifting and lowering the machine, we must pay special attention to your own safety and avoid damage to the machine.

4.3 Transportation

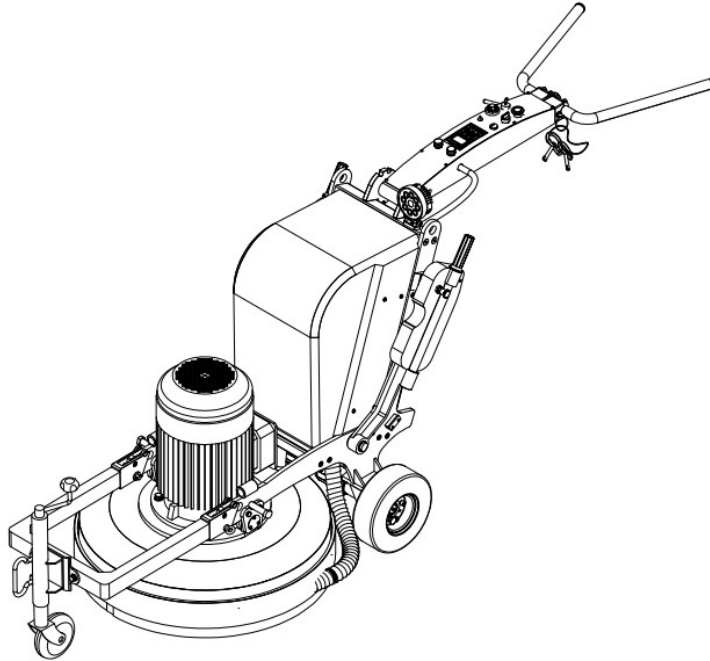
There are two types of transportation methods for this machine, manual and automatic. It depends on the storage battery of the machine itself during transportation.

4.3.1 Manual

1. Adjusting the handle and swing lever to working position, additional weight to transport position. (The specific adjustment actions of each component are described above. The adjusted machine is shown below).
2. Rotating the support wheel handle can lower the support wheel and raise the grinding device from the working area. It is recommended that the lowest position of the grinding disc is 1" (25mm) from the ground.
3. Unlocking the clutch device: Unscrew the clutch device, then pull out the clutch pin and rotate the clutch pin sleeve and embed the clutch pin in the inhibiting device of the clutch pin sleeve to tighten the clutch device.
4. Use the handle to push the machine.



① Limiting position 1



Note:

1. When the clutch pin is pulled out, it may get stuck. Just shake the machine and pull out the clutch pin.
2. Pay attention to your own safety when lifting the machine, be sure to do no more than you can.
3. Take out the grinding pads to prevent it drops and lost before transport, resulting in unnecessary losses.
4. When using manual push mode, the clutch must be unlocked.
5. Using hand-push way when clutch device in the locked state, will result in the drive motor damage!
6. When rotating the support wheel, remember not to rotate to the highest position, to prevent the support wheel off lead and the final hole is not aligned well.
7. Rotating the support wheel, it is necessary to always pay attention to the height of the grinding disc from the ground, which cannot be too low to prevent the disc shaking lead to collision with the ground, damage the disc; it is recommended that the disc minimum position is 1" (25mm) from the ground.

4.3.2 Automatic

Rotating the support wheel handle can lower the support wheel and raise the grinding device from the working area. It is recommended that the lowest position of the grinding disc be 1" (25mm) above the ground

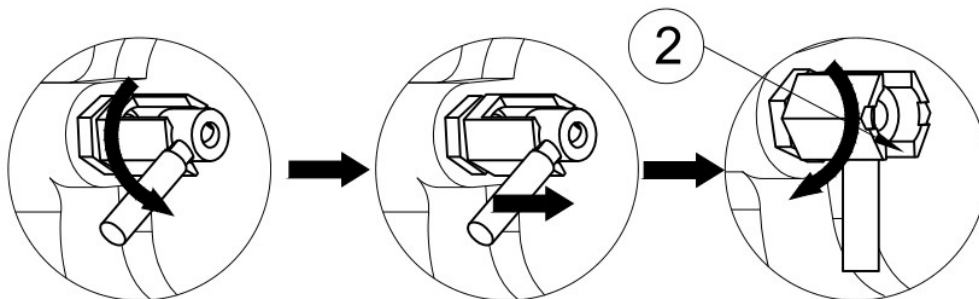
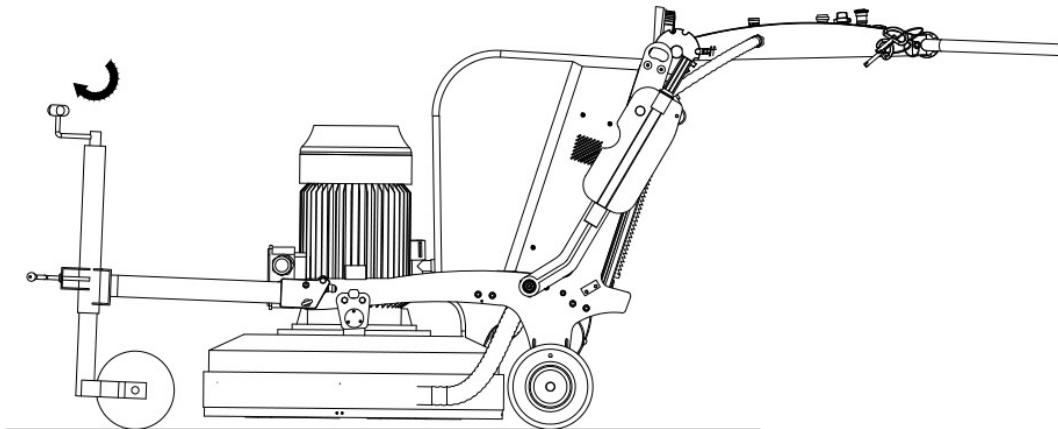
1. Adjusting the handle and swing lever to working position, and additional weight to transport position. (The specific adjustment actions of each component are described above. The adjusted machine is shown below).

2. Locking the clutch device: When the machine starts working, unscrew the clutch device, then pull out the clutch pin and rotate the clutch pin sleeve, and embed the clutch pin in the inhibiting device of the clutch pin sleeve to tighten the clutch device.

3. Turn on the emergency stop on the swing lever control panel.

4. Press the button of drive wheel on the electric control box, adjusting the drive wheel speed to more than 30.

5. Using the forward and backward switch to transport.



② Limiting position 2

Note:

1. The emergency stop switch should be screwed or pressed and cannot be pulled. The manufacturer does not compensate for any loss caused by improper operation.
2. Take out the grinding pads to prevent it drops and loss before transport.
3. During the operation, you must pay attention to the electric quantity of the reserve battery.
4. Be extremely careful when polishing or transporting on slopes (up to 17° slope).
5. If it is a steep slope, must use a winch. Do not stand behind the machine.
6. Before walking on the slope, make sure the battery power is more than 40%, the clutch is in the locked state.
7. Moving down a slope, the machine should be driven slowly in the reverse direction.
8. Moving up a slope, the machine should be driven slowly in the forward direction.

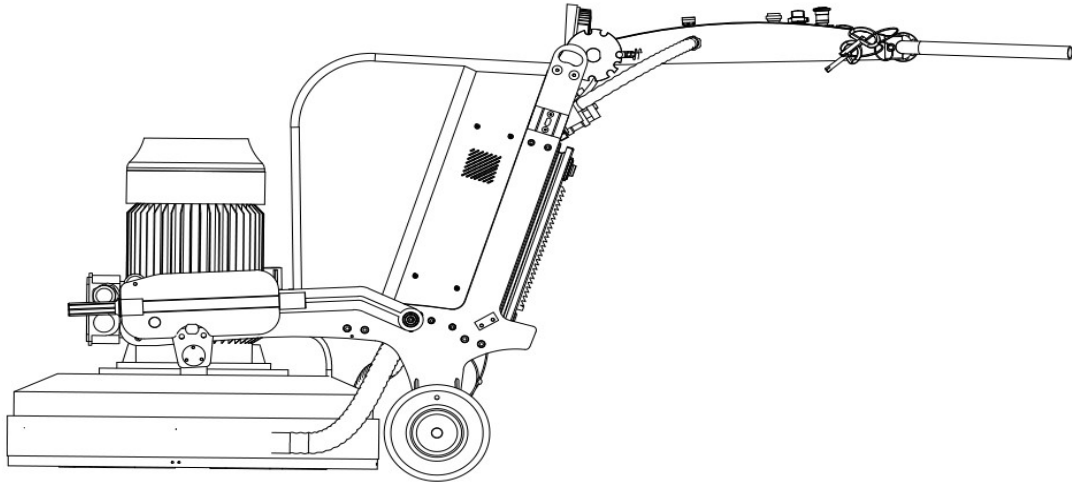
4.3.3 Transportation and storage

1. It must be careful to move a machine in manual mode or on the slope. Even a small slope can create large forces. In this case, the user can't hold the machine by hand.
2. The machine should not be lifted with the handles, motors, frames, or other parts. It is best to transport the machine which is tightly held on the pallet/slide.
3. If there is not a crane or forklift never try to lift the machine.
4. If the machine is not parked on a pallet or bracket, do not use a forklift truck to lift below the planetary grinding head. Such behavior may cause irreparable damage to the machine's discs and other internal components.
5. During transportation, please fix the machine firmly to avoid damage or accidents.
6. During transportation, the grinding device should touch the ground and a tool plate should always be installed to protect the locking mechanism.
7. Please store the machine in a lockable, keeping it out of the reach of children.

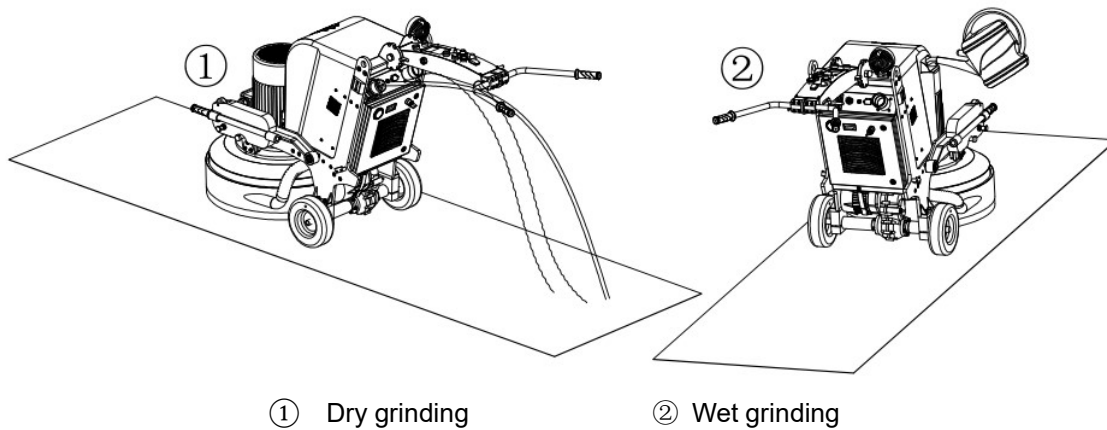
4.4 Start and stop the grinder.

1. Start the grinder

(1) Firstly adjust swing lever, handle and additional weight to the corresponding working position, place the supporting wheel device in the lowest position and invert it or disassemble it (as shown in the figure below).



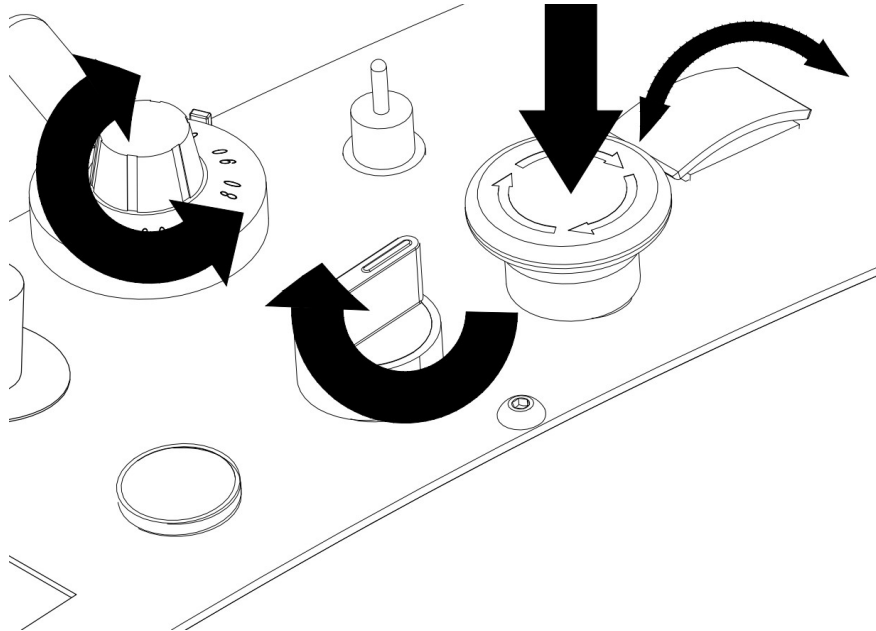
(2) Lock the clutch pin (unlock the clutch pin if in the manual mode), plug in the power cord (ensure that the emergency stop is pressed down and the switches are reset); if the machine using for dry grinding, connect the vacuum cleaner (Vacuum cleaner is equipped with a quick connector, so it can quickly connect to the vacuum cleaner); if the machine using for wet grinding, it's necessary to fill the water tank with water.



① Dry grinding

② Wet grinding

(3) Turn on the emergency stop switch, rotate the speed regulator to adjust the rotation speed of the motor, turn the switch to the left to rotate the motor forward (rotate to the right to reverse the motor) (turn on the water switch before water grinding)



2. Stop machine: press the emergency stop switch and unplug the power to stop the machine (remember to reset the speed regulator).

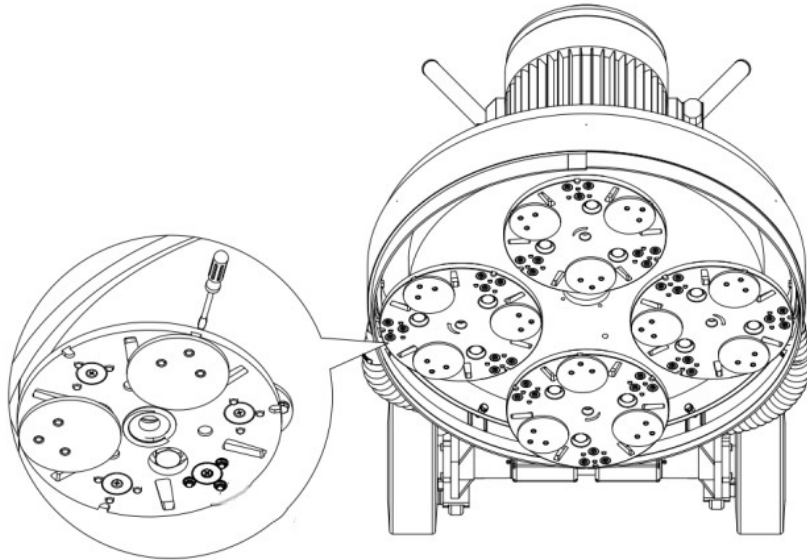
Note:

When stopping the machine, it is recommended to unplug the power supply for safety reasons.

The emergency stop switch can only be rotated and pressed down according to the direction shown on its top and cannot be pulled up.

4.5 Replace abrasives.

When changing the grinding disc, adjust the machine to the lifting position, then tip the machine carefully and lay the machine flat. After leveling the machine, stand next to the machine and check whether the machine is stable. Change the polishing pads with a flat-blade screwdriver and replace it with a new one.



Note:

1. Please ensure that the machine won't tip forward before replacing the abrasive.
2. After the machine has been running for a period, the abrasive, grinding disc and the gear box will generate high temperature. Be careful to be burn when you replace the abrasive.
3. Replace the abrasive only when the power is unplugged, and the emergency stop is pressed.

4.6 The wire winding

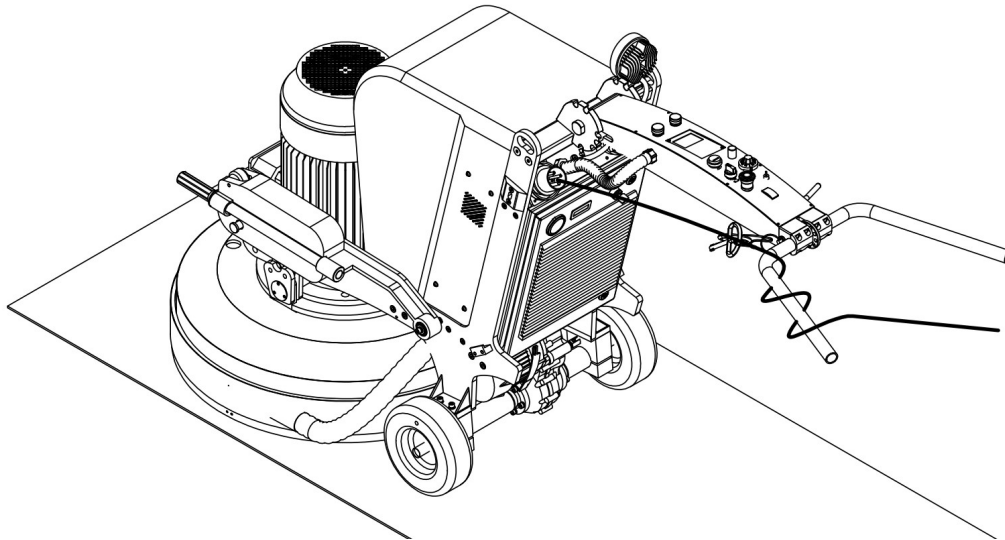
While the machine is working, the wire wind method is particularly important, you can greatly improve your work efficiency and improve your safety. The specific operation is as follows:

1. Plug in an external power supply.
2. Turn the power cord through the swing lever handle.
3. The power cord wrapped around the handle at least two laps.
4. Slightly hard to pull the power cord to ensure that the power cord has enough friction so that the power cord is firmly fixed on the handle.

Note:

1. Make sure the power plug and socket are securely connected.
2. Please make sure the emergency stop has been pressed before plug the power supply, and the other switch has been reset.
3. Power supply line, please use (please find in Manual) wire minimum wire size.

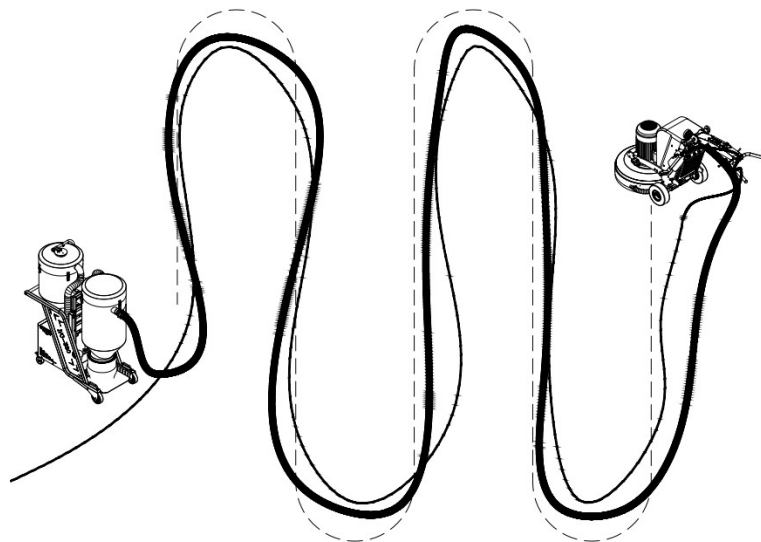
4. Please use the correct power supply.



Note: The machine model of the above picture can be ignored, the grinding route and winding method are for reference only.

4.7 Grinding route (for reference)

When grinding the ground, it should be in accordance with the # method to grind the ground to get better effect. And according to # to grind ground, the machine grinding direction makes the wire more and more farther away, so that you can further avoid the interference of the wire to the normal work of the grinding machine.



5. Equipment maintenance

5.1 Overview

We recommend that the grinding machine be checked regularly to extend the service life.

Note:

During the maintenance and repair process, the power of the grinder must be disconnected.

Wear protective equipment such as safety shoes, protective gloves, protective masks, etc.

5.2 Daily check

5.2.1 Check the switches

The emergency stop switch should be rotated along the rotation direction of the switch. Turn the motor positive and negative knob to start the machine (Safely and normally start the machine, the running light will light up, if not normally start, then there will be the error code showed on the display screen)

Turn on the grinder and press the emergency stop switch to see if the machine stops.

Turn on the emergency stop switch and turn LED light switches to check if the corresponding light is on.

Note:

For safety reasons, it is strongly recommended to press the emergency stop switch when stopping the device, which would be safer.

When starting the machine, it is recommended to press the handle to lift the machine slightly, reduce the pressure of the grinding disc, and reduce the friction between the grinding abrasive and the ground, so as to avoid motor overloading when starting the machine.

5.2.2 Check the disc cover.

When there is a large amount of dust, it is easy to cause dust nozzle of grinding disc cover clogged by dust, use flashlight to see if there is dust clogged, clean up if necessary.

5.2.3 Check the grinding plate.

In the case of long hours of work or a large amount of dust, the grinding plate of grinding head may be stained with dust. It will lead lack of connection between grinding head and plate, which will affect grinding efficiency even lead to abrasive drop and cause accident. In view of this situation, please remember to clean up in time.

Note:

Be sure to wear protective equipment for maintenance checking such as protective gloves, protective masks, insulated shoes, etc.

The maintenance operation must be done when the emergency stop pressed and the power unplugged.

When the machine is tilted, make sure that the machine is flat and then check the operation of the grinding disc.

5.2.4 Long-term storage of batteries

Stored for a long time, the machine battery should be maintained and charged once every 6 months

Note:

Be sure to wear protective equipment for maintenance checking such as protective gloves, protective masks, insulated shoes, etc.

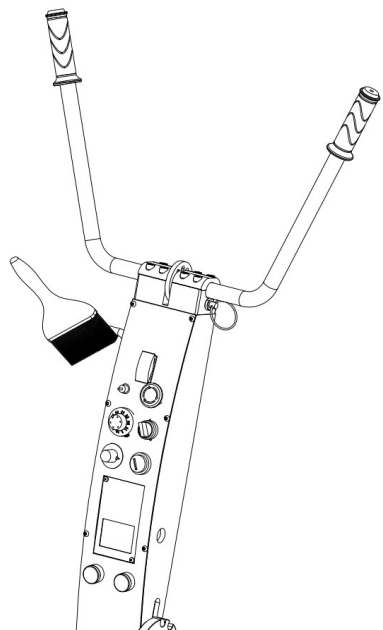
The maintenance operation must be done when the emergency stop pressed and the power unplugged.

When the machine is tilted, make sure that the machine is flat and then check the operation of the grinding disc.

5.3 Cleaning

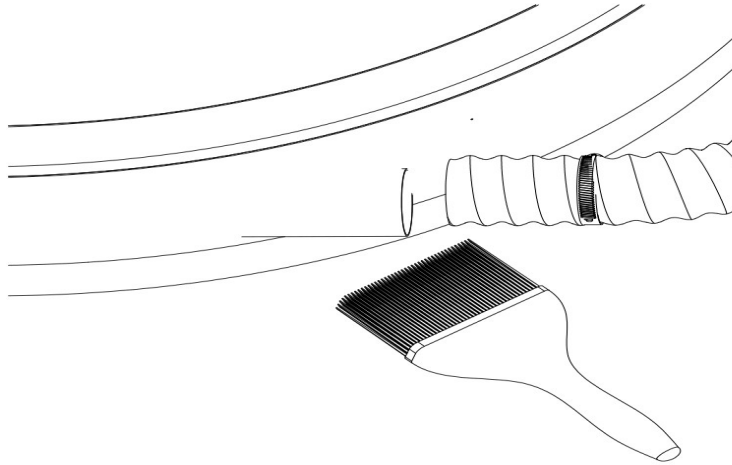
5.3.1 Clean switch

Grinding machine works on site for a long time, and the switch will inevitably run into the dust. For this reason, please check the switch after grinding, to see whether the part is clogged by dust. Otherwise, it may cause the switch failure.



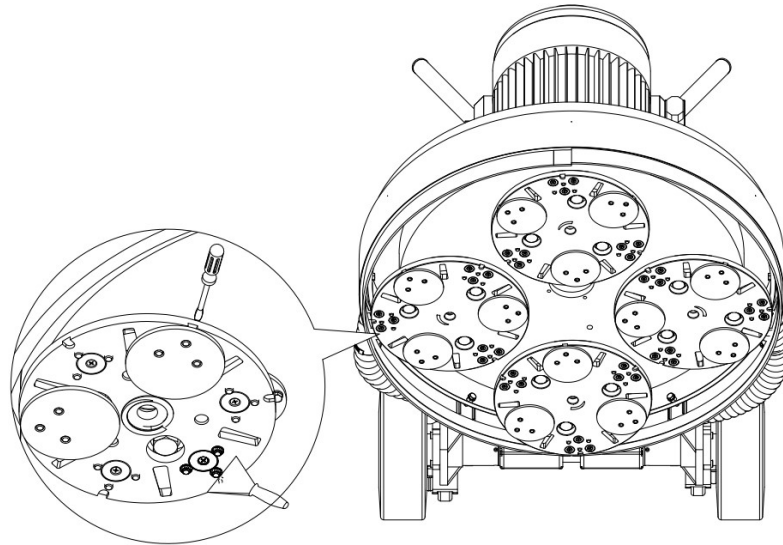
5.3.2 Clean the grinding plate cover.

Remove the vacuum tube connection, illuminate the dust nozzle with a flashlight, clean the dust nozzle with brush. So that it will not clog the dust nozzle and affect dust collection efficiency.



5.3.3 Clean up the grinding plate and conversion block

Tilt the machine and use a cross screwdriver to remove the pads, and use shovel to remove dust. If you do not clean up in time, it is possible to make the pads disconnected, and pads fly out when grinding, causing damage to the machine and threaten personal safety.



5.3.4 Note

1. Be sure to disconnect the plug from the socket before cleaning, maintenance or assembly.
2. Be sure to clean the whole grinder after each day's work. Do not use a pressure washer to clean the machine directly.
3. In order to cool the equipment effectively, the cooling port must be kept clear and clean.

5.4 Overloading

The machine is equipped with an overload protection function on the inverter. When the machine is overloaded, the overload error will be shown on the display of the control panel. In this case, just disconnect the power plug and then reconnect it.

5.5 Maintenance

Any repairs must be performed by Xingyi Service Center training service personnel and use original Xingyi accessories. If your machine needs repair, please contact your retailer.

6. Frequently Asked Questions and Solutions

This chapter describes some of the possible failures and how to handle them. If you still cannot resolve or have an error, please contact your nearest retailer.

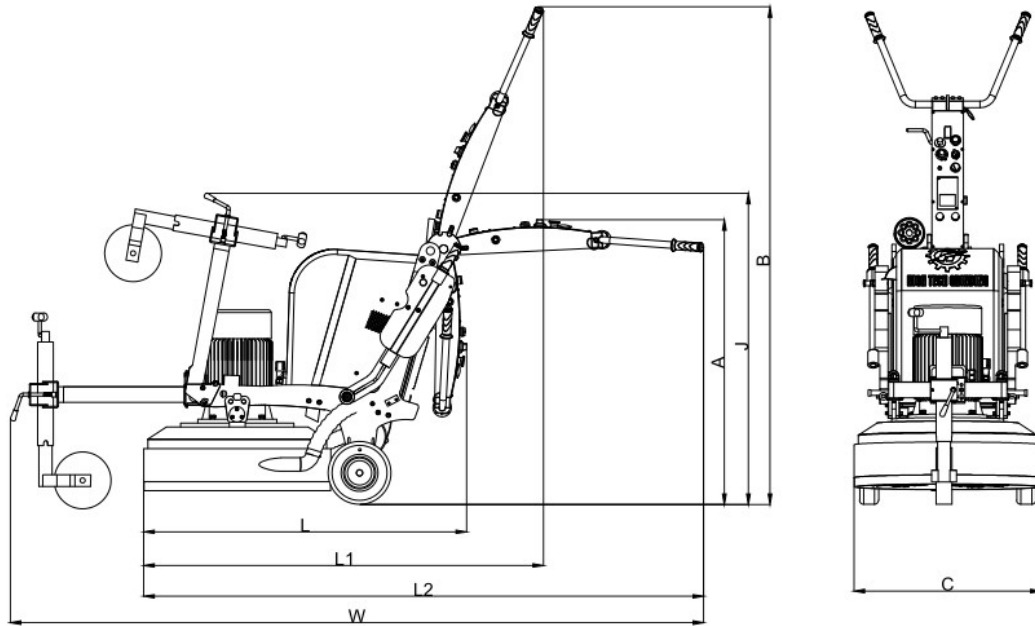
Problem	Possible reason	Solution
The machine can't running	Emergency stop switch is pressed	Turn on the emergency stop switch
	Overload	Unplug the power cord and plug it in again.
	Power and power cable damage	Contact a licensed electrician
	There is a problem with the rear contact switch button	Make sure the wires are properly connected to the back button, check the contacts and the ignition button
The machine uttered a low buzz when turn on and turn off.	Dust in the motor impeller	Contact a licensed electrician
	Motor burned down	Contact a licensed electrician or check if the input power has three-phase input
	Phase loss input, currently only two phase inputs. Turn off the machine power to avoid burning the motor	Contact a licensed electrician or check if the input power has three-phase input
The machine is difficult to hold or the motor current	There are not enough diamonds pads under the device or using wrong diamonds	Use the number of diamonds recommended by Xingyi to reduce workforce on the

consumption is large		grinder and operator
Unable to charge	Field voltage is lower than 350v	
	Battery power is used to 0	Charge with a single-phase electric charger for 1 hour
	The battery is damaged, or the times of impulse electricity it has been exceeds its life.	Replace the battery
	Machine charger fuse burned	Consider replacing a fuse
Machine beating	Diamond pads may not be properly installed or heights are different	Properly install diamonds with the same height
	The grinding disk is not flat	Adjust and install the disks
Machine forward, backward out of control	Low battery	Check if the battery circuit is normal
	Walking motor damage	Check and contact with factory to repair and change the key
	Battery damage	Check and contact the factory for repair and replace the damaged button.

7. Technical parameter

The table and picture show the technical data and dimensions of the grinder.

680-4A	
Engine power	11KW/14.75HP
Rated voltage	3P,220V 3P,380V
Rated current	38.6A 22.3A
Input hertz	50HZ/60HZ
Inverter power	15KW/20.11HP 11KW/14.75HP
Working width	680mm/26.77in
Diameter of grinding disk	230mm/9.06in
Grinding speed	350 ~ 1680 r/min
Dimension(rear position)L*W*H	1530×680×2064mm/60.24×26.77×81.26in
Dimension(working position)L*W*H	2794×680×1212mm/110×26.77×47.72in
Dimension(packaging position)L*W*H	1400×740×1160mm/55.12×29.13×45.67in
Max.Length*width*height	1378×680×1138mm/54.25×26.77×44.80in
Total weight	425kg
Cable model	10mm ² 6mm ²
Storage temperature	-20 ~ +60°C / -4 ~ +140°F
Working temperature	-10 ~ +40°C / +14 ~ +104°F
Humidity	Below 95% (no condensation)



8.Warranty

Xingyi does not bear the cost of machine damage caused by improper transportation, unpacking and improper use. Local distributors may be subject to specific warranty terms, please contact your local distributor for specific warranty terms.